

mazda line

FACE TO FACE WITH MACE

"Nowadays you have to defend yourself," Mazda Central's Nancy Wilson explained after taking a company-paid tear gas class. "I took this class because I wanted some personal protection with all of this crime around us. Now I carry tear gas."

Apparently a lot of Mazda employees agree with that sentiment. Forty-five men and women from the Mazda Central and Mazda Pacific facilities took the tear gas class one evening after work at the MDP office.

According to secretary Mary Parsell, "In order to carry tear gas legally in California, you have to be certified—which includes attending an instruction class in using it safely and legally."

LEARN WHILE YOU EARN

Mr. Ogawa, president of Mazda Motors of America (Central), Inc., has authorized an employee tuition reimbursement program for all employees of Mazda Central, Mazda Pacific, Mazda Northwest, Mazda Gulf, and the port personnel of Tacoma, Port Hueneme, and Benicia.

The new program is part of the company's expanded employee benefits package that was unveiled at Mr. Ogawa's meetings with the employees in March.

According to Mr. Ogawa, the company will reimburse an employee for any college courses or trade school classes that are job-related. Mazda will refund up to a maximum of \$250 a year in tuition and book costs upon proof that the course was completed satisfactorily.

Employees who wish to participate in the program should get the approval of the head of their department or their company's vice president/general operations manager prior to enrolling in any class.

Mazda Great Lakes employees should see Gene Naylor, administrative manager at MDGL, for details on their distributor's tuition program. MDGL has traditionally refunded half of the tuition costs for any job-related college courses.

"There are a lot of opportunities for our employees to advance here at Mazda," Mr. Ogawa noted. "This tuition program is one of the best ways for an employee to get the necessary education and training to qualify for these opportunities."

An off-duty Los Angeles city policeman was hired by the company to teach the class. Bill Wolf, Mazda Central's public affairs manager, reported that the response was excellent.

"If you carry tear gas, it should be held in your hand as you cross a dark parking lot," Nancy Wilson said. "You're not supposed to carry it in the bottom of your purse or on a key ring. And never stand down wind when you use it."

She added that if you feel someone is following you, you should take an alternate direction to make sure the other person isn't just on the same path.

The class instructor also explained that using tear gas illegally can result in a three-year prison term. The victim must truly be threatened before using the tear gas, he stressed. Using it on dogs or on people with whom you are angry is forbidden.

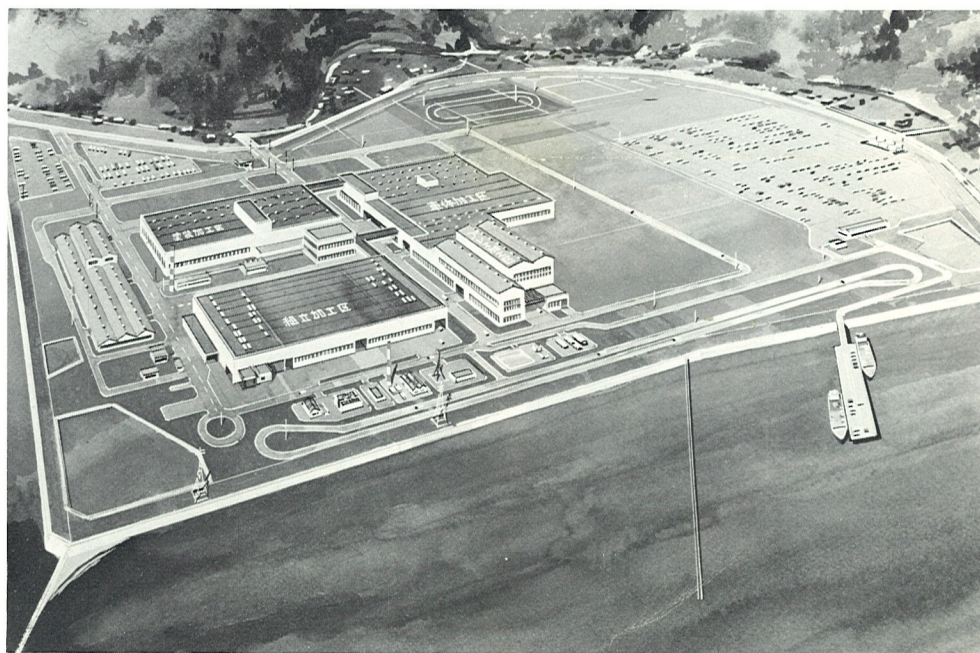
Tear gas can be felt as far away as 15 feet, but the best method during an attack is to spray it directly in the assailant's face, the Mazda employees learned.

Nancy Wilson summed up the feelings of the class when she said, "I hope I never have to use it!"



SELF-DEFENSE—Mazda Central's Nancy Wilson is now certified by the state of California to carry a tear gas canister, thanks to a Mazda-sponsored Mace class.

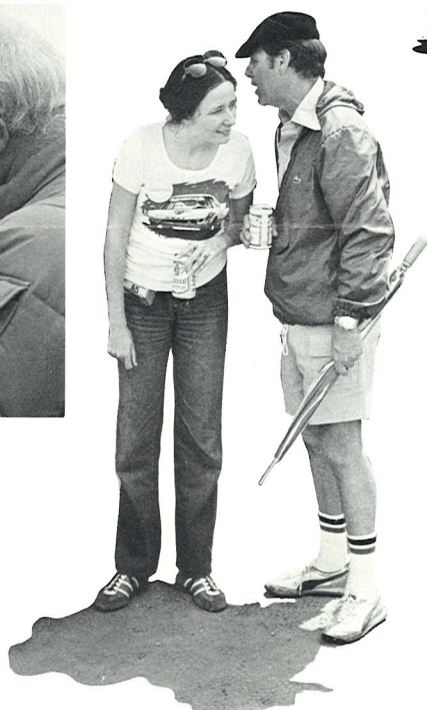
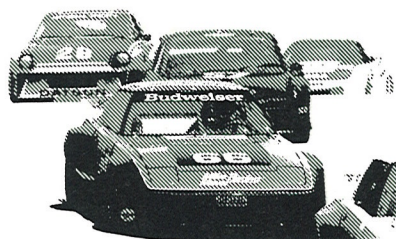
HOFU CITY



NEW ASSEMBLY PLANT—Now under construction, Toyo Kogyo's new \$167 million assembly plant in Hofu City, Japan, should be completed by fall 1982. Approximately 1,800 employees of TTK will be working at the auto plant.

DOWN BY THE RIVERSIDE

Over 700 of Mazda's closest friends were invited to share a ringside seat at the Riverside Grand Prix on April 26. The Southern California Mazda dealers, employees of Mazda Central and Mazda Pacific, and the Mazda racing team met for lunch at Turn 7 as actor Gene Hackman drove his Mazda RX-3 in the RS race. That afternoon the RX-7 drivers took to the track for six hours of endurance driving.



LOS ALAMITOS RACE TRACK



THE ONLY RACE MAZDA CAN'T WIN—High-rolling Mazda Pacific and Mazda Central warehousemen spent an evening at the races at the Los Alamitos Race Track on March 12. In honor of the visiting Mazda crew, the race track officials named one of the races after Mazda. Shown in the photo (left to right) are Richard Hogate (behind the driver), Danny Tucker, Val Stach, and Bill Downing. No news yet on the winnings, although if the IRS audits any of the warehousemen's tax returns for unreported earnings, Mazda Line will be the first to let you know.

MAZDA CENTRAL BESTS MAZDA PACIFIC IN THREE-GAME SERIES

Mazda Central and Mazda Pacific held their annual softball game on April 11, with the Mazda Central team scratching out a narrow victory in the best-of-three-games series.

"It was a perfect day for softball," said Mazda Central team captain Jim Richert, "and the most important thing was that everyone had a great time. It was also an opportunity for everyone to get to know each other better."

Each game of the three-game series ended up with a close score, with neither team scoring a lot of runs. The first game was won by the Mazda Pacific team by a score of 6 to 4, with the Mazda Central team winning the next two games by scores of 6 to 4 and 8 to 7. The final game saw the Mazda Pacific team behind by one run in the last inning, but thanks to some clutch hitting, they went ahead by a run and it was the Central team's last at bat, down by a score of 7 to 6. With 2 out, Steve Bever doubled and then scored on a clutch single by Scott Ayr for the winning run.

Linda Lucarelli pitched her Mazda Central team to victory in the second game, with Alice DeLeon doing an outstanding defensive job at second base. Cindy Dalton had some clutch hits for the Pacific team, and Teri Hancock made an outstanding catch at second base. Vicki Mitchell's several shots to left field were almost too hot to handle. Millie Contreras reached base almost every time at bat, thanks to her fine hitting.

Phil McKellep homered for the Pacific team, which tied the score of the last game. Don Wright, Mazda Central, in addition to his outstanding pitching and defensive play at shortstop, also homered, as did Andy Zageris.

Dick Hogate, Pete Cesario, Ric Hamilton, Chuck Alberti, and Jim Bruce served as umpires.

Mazda Pacific team captain Danny Tucker says he's ready for a re-match next year.

The winning team received a trophy for display in their lobby.

A 5-STAR SALUTE TO...

Mazda Central's Dave Watson and Howard Caudle, and Mazda Northwest's John Rice and Dick Ryberg are all celebrating their fifth anniversary with the company.

MAZDA NORTHWEST SETS NEW RECORD FOR PARTS

Mazda Northwest insiders refer to their smooth-running parts warehouse as "the little country store in the northwest." But if business continues to grow as it did in 1980, that little country store may turn into a giant parts supermarket in no time at all.

According to Jim Hawley, Mazda Northwest's parts depot manager, over \$5 million in parts moved through the warehouse in 1980—a new record for the distributor.

Harold Irey, warehouse foreman, credits his seven-man crew of warehousemen with keeping up with the boom in business. The warehouse physical inventory in January, for example, went so smoothly and accurately on the first count that MDNW only had to miss two days of parts shipments to dealers. Normally it would have taken five days for this type of inventory.

These same warehousemen were the reason for the virtually uninterrupted parts shipments to MDNW dealers during the facility move in July, 1979.

To show its appreciation for this fast-working team, the distributor will host the entire parts department at an upcoming Seattle Mariners baseball game.



TIME OFF FOR GOOD BEHAVIOR—
Some of the seven Mazda Northwest warehousemen who were instrumental in setting the 1980 record year in parts celebrate at an after-hours company party. Left to right are: Larry Grams, Mark "Moose" Soroe, Montie Griffin, Mike Franco (the automotive technician in the service department who never misses a good warehouse party), and Jerry Barlow.

TEN YEARS AT MAZDA



On George Clark's desk at Mazda Central is a little gold trophy from his secretary inscribed with the title "World's Greatest Boss." George will be the first to tell you, "At first I was flattered she got that for me. Then I found out my secretary got one for the guy in the office next door, too."

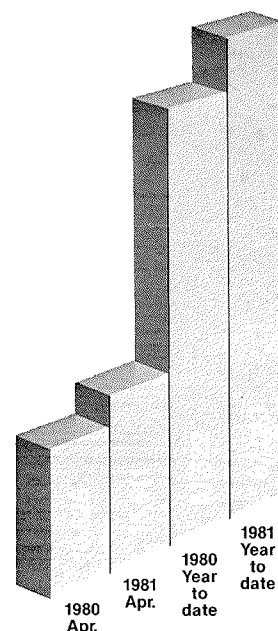
Don't feel sorry for George, though. He's celebrating his tenth year at Mazda with a brand new title. He is now the Parts Field Operations Manager, in charge of distributor and dealer parts training and the development of dealer operating standards.

One of his new assignments is to establish an on-line dealer computer system that will allow dealers to send their parts orders directly to the distributors' computer system.

"I've seen vast improvements in the last three years in the parts procedures,

information, and computer operations," he said. "Check back with me in another ten years and see if I've met my new set of job objectives in this department," George added with a smile.

JUST ONE LOOK...



UP, UP, AND AWAY—*April car and truck sales continued to climb. Monthly sales were 46% ahead of the same month last year while year-to-date sales were 30% greater than 1980's total for the same period.*

FIRST AID CLASS

JUST IN CASE—Mazda Distributors Northwest office personnel are now qualified to administer C.P.R. (cardio-pulmonary resuscitation), after having attended one of two classes at MDNW's facility in Kent, Washington. When MDNW vice president/general operations manager Frank Garard learned that the American Heart Association had instructors available for group lessons, he decided that this would be an excellent opportunity for MDNW personnel to learn this life-saving procedure. Half of the employees attended the first class on March 16, and the other half attended the second class on March 23. Shown in the photo (left to right) are: Debbie Nelson, Sharon Meadows, Wes Martin, Jerri Deegan, Bob Linke, Mark Soroe, Dick St. Yves, with instructor Ann Wyne and model patient Harold Irey.



LASSEN IN WINNER'S CIRCLE AGAIN

Watch out, Jimmy the Greek. Mazda Gulf has a sports prognosticator who may put you out of business.

Pete Lassen, Mazda Gulf's distribution manager, has followed his second place finish in the opening round of Mazda's Winner's Circle race contest with a winning entry for the round #2 Riverside race.

While just about everybody was betting that the team of Walt Bohren and Lee Mueller in the #98 Mazda RX-7 would be unbeatable in GTU at Riverside, Lassen coolly predicted that Roger Mandeville and his co-driver Amos Johnson would make the #55 BF Goodrich RX-7 the top Mazda.

He also predicted the car would complete 169 laps. When the Bohren/Mueller car dropped out with engine trouble before the halfway mark in the race, it began to look as if Pete's crystal

ball was operating perfectly.

The #55 RX-7 just kept turning good, consistent laps all through the race. And, although a Datsun won GTU, Mandeville and Johnson came home 2nd in class and claimed top Mazda honors.

Their final lap tally was 168, just one circuit shy of what Pete's crystal ball told him.

Suzi Soper of Mazda Great Lakes and Carol Sander of Mazda Central also bucked the trend and picked the Mandeville/Johnson team. Bucking the trend means 15 bucks for Suzi, who called 132 laps, and 10 bucks for Carol, who guessed 215 trips around the track.

Congratulations to Pete, Suzi and Carol. Now, does anybody know where Pete keeps the crystal ball?

CAR WARS

Your chance to win with Mazda

Win cash in the Mazda Winner's Circle racing contest. All you have to do is predict the winning Mazda race car driver in the June 14 Pepsi Grand Prix at Brainerd, Minnesota.

All Mazda employees are eligible to enter the contest. Just fill in the entry blank below and submit it to your local Mazda Line reporter or mail it directly to Bill Wolf at Mazda Central, 3040 East Ana Street, Compton, California 90221.

The three employees who come closest to predicting the name of the top Mazda race car driver and the average speed during the Pepsi Grand Prix will win \$20, \$15, and \$10.

Here are some tips to help you choose

your winning Mazda driver:

Mazda drivers for this year's Pepsi Grand Prix:

Walt Bohren Kathy Rude Jim Mullen
Lee Mueller Jim Cook

Last year's top Mazda driver:

Jeff Kline took the honors last year when Walt Bohren had to drop out of this race due to mechanical troubles. (Insiders at Kent Racing—the sponsors of Bohren's car—say they will have an all-new Mazda RX-7 ready for Bohren in time for the Pepsi Grand Prix.)

Last year's average speed:

102.201 mph

The race:

33 laps over approximately 99 miles

Favorites:

Given his standing as the 1980 GTU champion and his familiarity with IMSA tracks, Bohren must be given a slight edge as the favorite. Mueller, however, can be looked upon as foremost among the challengers and has a very strong shot at the victory.

MAZDA WINNER'S CIRCLE CONTEST

Employee name (please print): _____

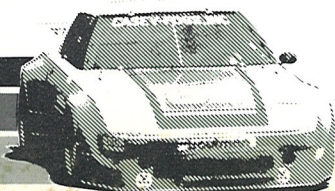
Employee location (check one):

- | | |
|--|--|
| <input type="checkbox"/> Mazda Central | <input type="checkbox"/> Mazda Gulf |
| <input type="checkbox"/> Mazda Pacific | <input type="checkbox"/> Mazda Great Lakes |
| <input type="checkbox"/> Mazda Northwest | <input type="checkbox"/> Port of Benicia |
| <input type="checkbox"/> Port Hueneme | <input type="checkbox"/> Port of Tacoma |

I predict the Mazda race car driver with the best finishing position in the June 14 Pepsi Grand Prix will be: _____

I predict the average speed during the race will be _____ mph.

Submit this racing contest entry form to your local Mazda Line reporter by Friday, June 5, 1981. Contest winners will be announced in the July issue of Mazda Line.



MAZDA LINE

Mazda Line is the publication of Mazda Motors of America (Central) and its distributors. It is published monthly by the Public Affairs Department of Mazda Motors of America (Central) at 3040 East Ana Street, Compton, California 90221.

Managing Editor

Bill Wolf

Reporters

Jerri Deegan, Mazda Northwest
Bobbie Adams, Mazda Gulf
Suzi Soper, Mazda Great Lakes
Cindy Dalton, Mazda Pacific
Zelda Hawley, Mazda Central